

Integrating Geospatial and Statistical Information
Beijing, 9-12 June 2014

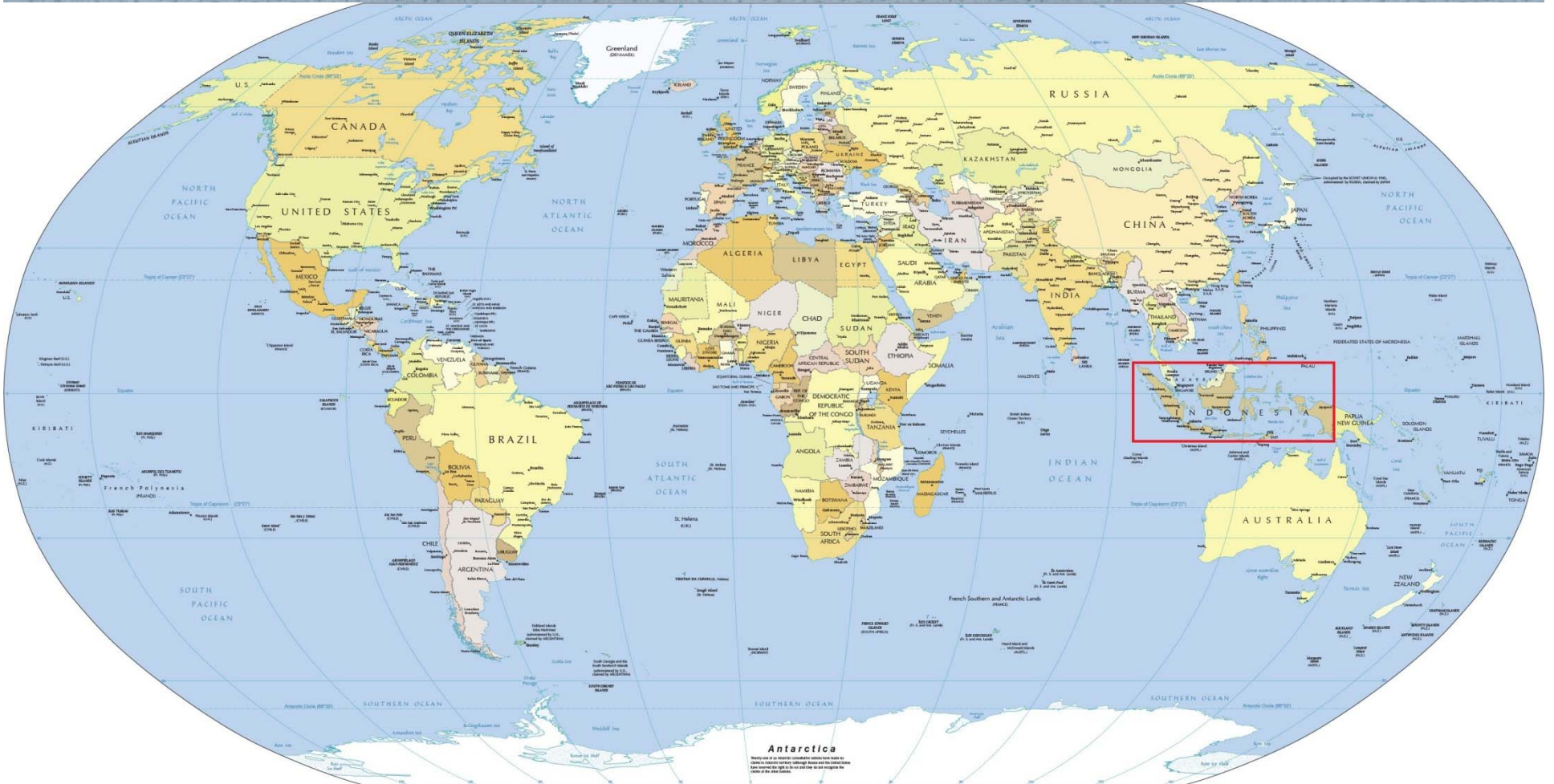
GRID-BASED VERSUS ADMINISTRATIVE APPROACHES

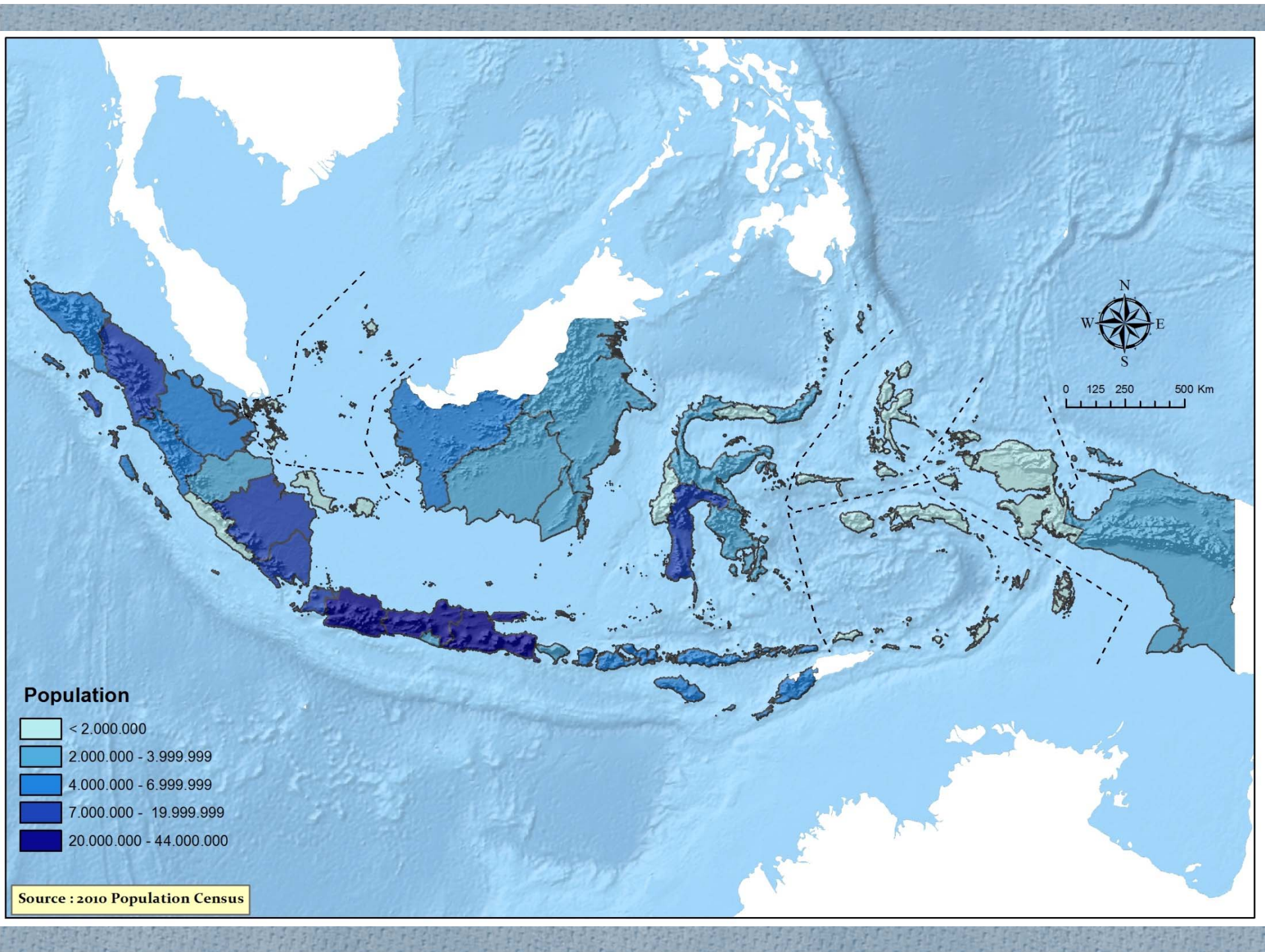
Lisa Ginting
lisa@bps.go.id



BPS STATISTICS INDONESIA

World Map





Administrative Approaches

- o The census and survey since 1961.
- o As the master framework which is derived from every Population Census or every 10 years.
- o The utilization of administrative approach is a applicable.

BPS - JICA

- o 2006 – 2008 : Joint operation between Japan International Cooperation Agency (JICA) and BPS Statistics Indonesia (BPS)
- o Project for Developing the Information System of Small Area Statistics.
- o Project Purposes
 - o Developing the statistical information system for small areas in BPS.
 - o Enhancing technical capacity of BPS to provide various statistical data and statistical maps by small areas for wide users.

Small Area Statistics

- o Regency/Municipality
- o District
- o Village
- o Grid Square
- o Census Block
- o Data coverage
 - o 2000 Population Census,
 - o 2003 Agriculture Census
 - o 2006 Economic Census.

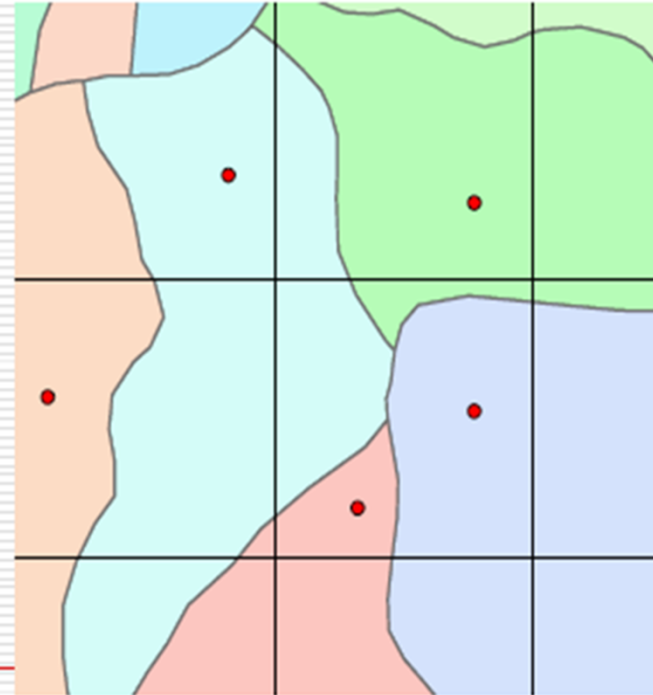
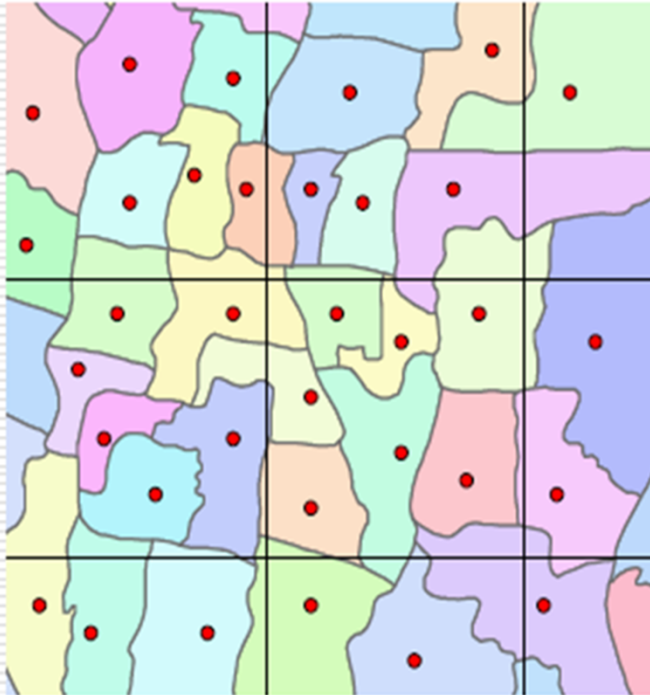
Grid Square Statistical Database

- o The system is based on Latitude and Longitude system and Landform Mapping System
- o There are three levels:
 - o Primary Grid Square: 1 degree x 1 degree (120 km)
 - o Secondary Grid Square: 5 minutes x 5 minutes (10 km)
 - o Tertiary Grid Square: 30 seconds x 30 seconds (1 km)
- o Used a centroid point method.

Grid Squares and Census Block

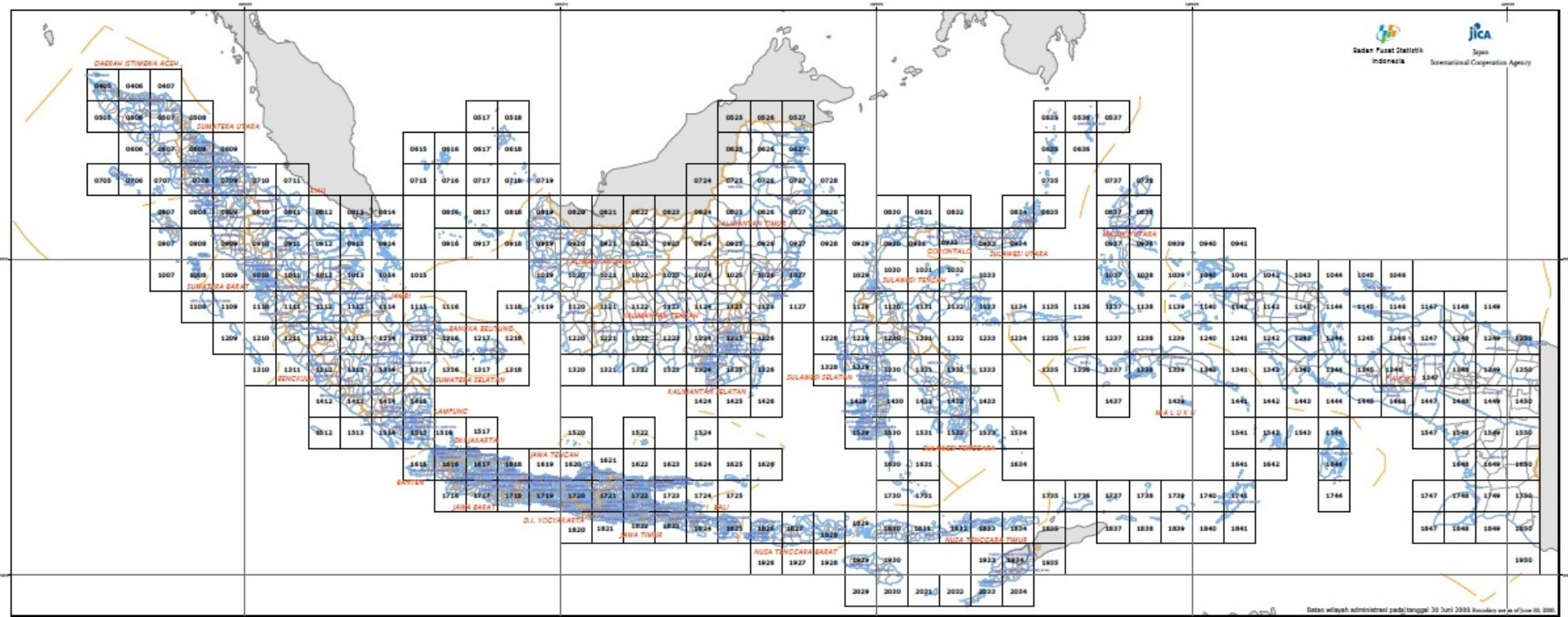
Grid Squares are larger than
Census Blocks.

Census Blocks are larger than
Grid Squares.



[• Centroid point]

Primary Grid Square



**CHILD WOMAN RATIO
DENGAN BASIC GRID SQUARE
SENSUS PENDUDUK 2000**

PROVINSI DKI JAKARTA



Legenda:

- Batas Provinsi
- Batas Kabupaten/Kota
- Batas Kecamatan

Child Woman Ratio
(Child, Age 0 - 4 / Woman, Age 15 - 49)

- < 0.3
- 0.3 - 0.4
- 0.4 - 0.5
- 0.5 - 0.6
- >= 0.6
- Tidak ada data

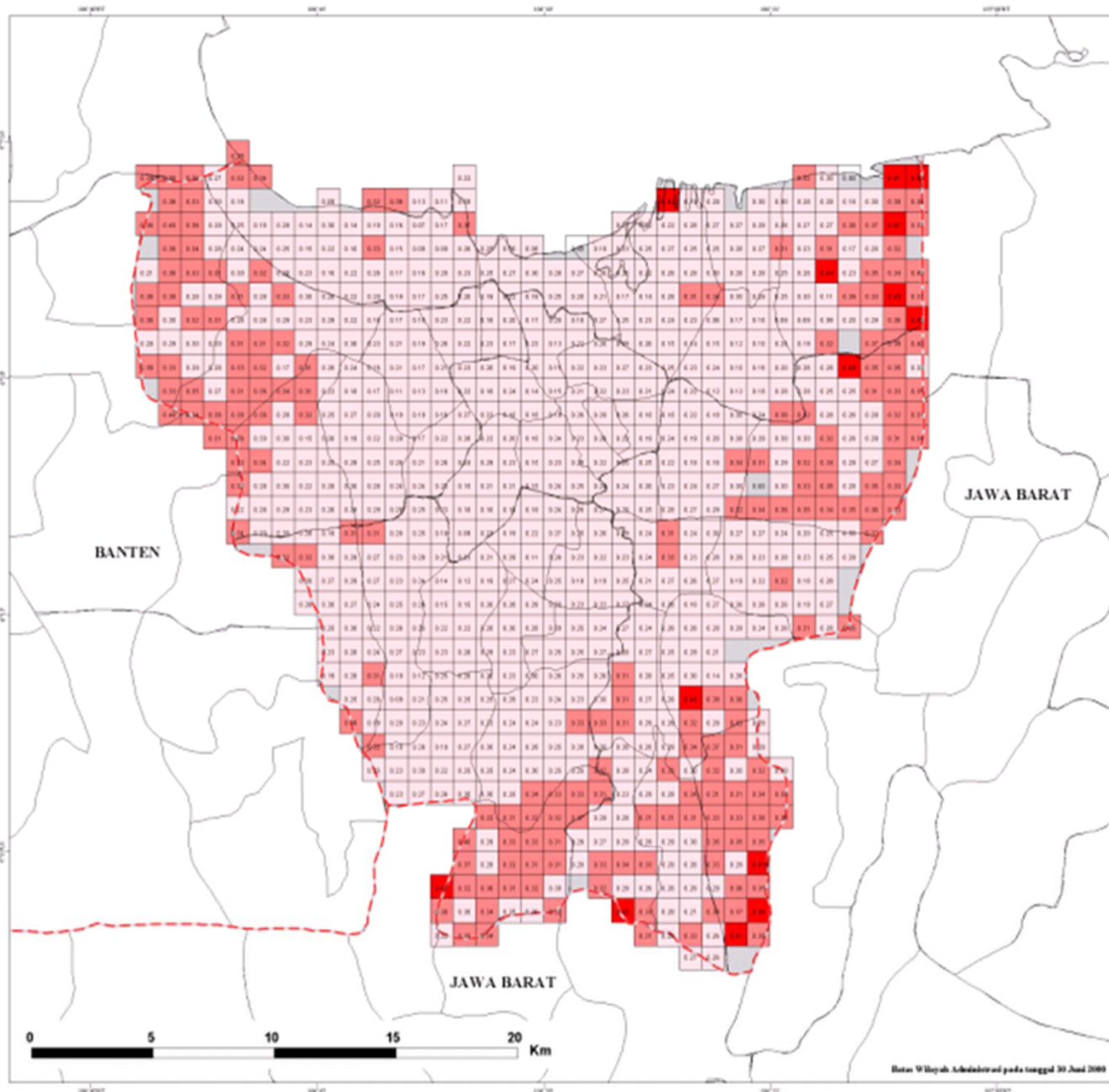


Badan Pusat Statistik

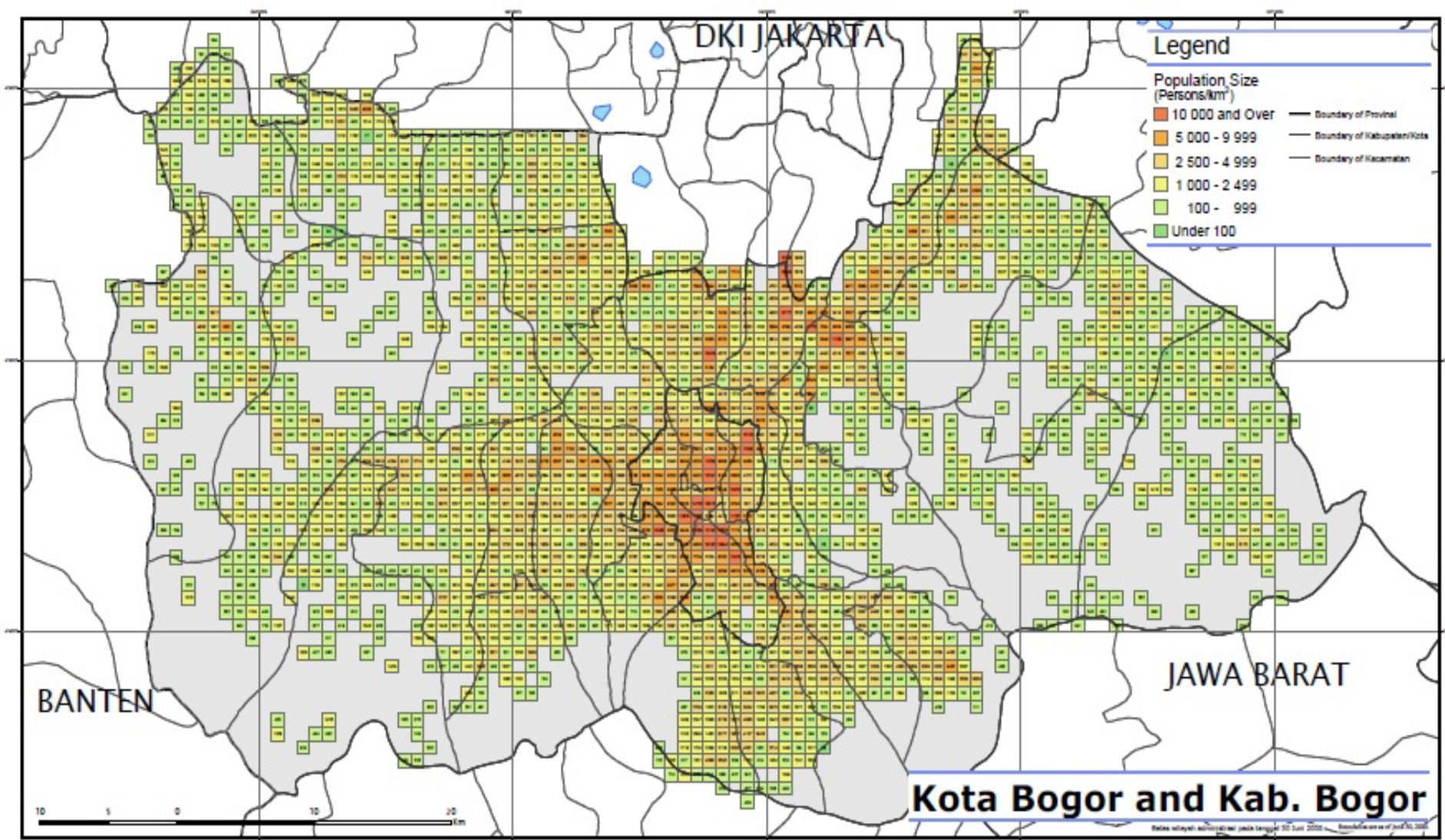


Japan International Cooperation Agency

KERJASAMA JICA DAN BPS



Batas Wilayah Administrasi pada tanggal 30 Juni 2000



Population Size by Basic Grid Square

2000 Population Census

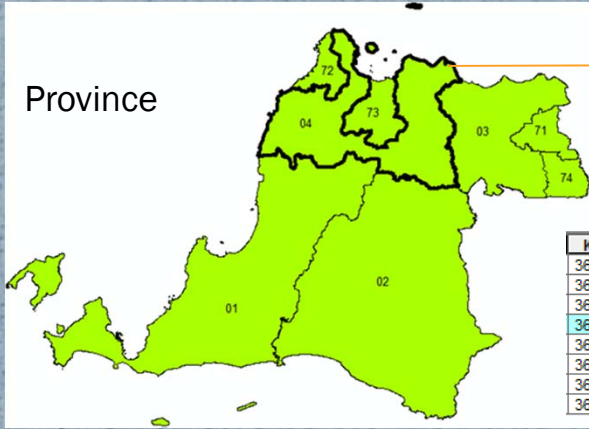


Free Software License with Program on Developing Information System of Land-Use Statistics (yang meliputi Sistem Peta Statistik (SPS) dan Sistem Informasi Geospasial (SIG)). The map development was prepared in the Project for Developing Information System of Land-Use Statistics in the Republic of Indonesia supported by BPS, Badan Pusat Statistik and Japan International Cooperation Agency (JICA).

2010 Master Framework

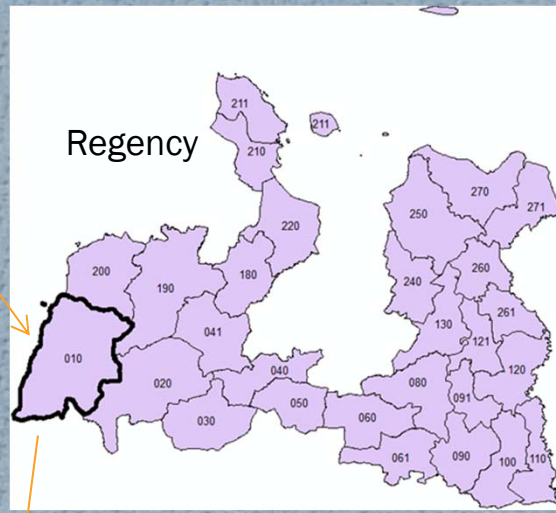
- o Year 2008 -2009, construct the statistical work areas for 2010 Population Census
- o Hierarchy of administrative area:
 - o Province
 - o Regency/Municipality
 - o District
 - o Village
 - o Census block

Province



KODE 2010	KABKOT
3601	PANDEGLANG
3602	LEBAK
3603	TANGERANG
3604	SERANG
3671	TANGERANG
3672	CILEGON
3673	SERANG
3674	TANGERANG SELATAN

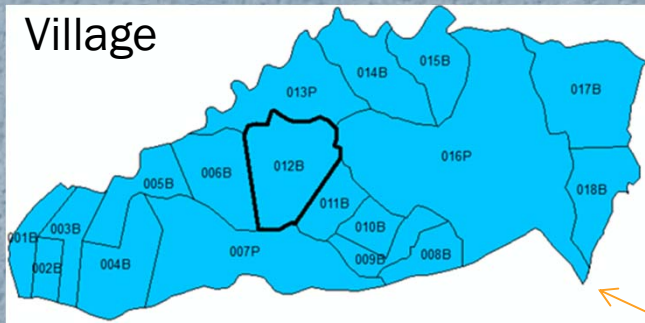
Regency



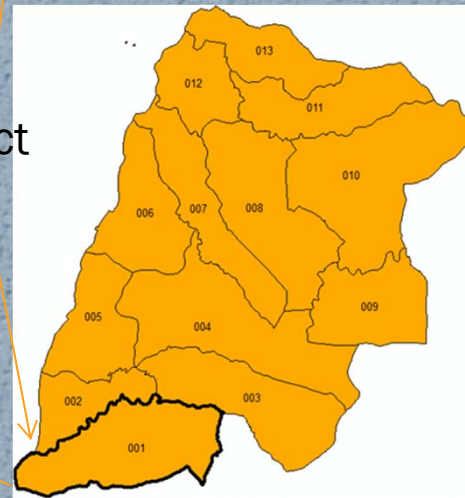
KODE 2010	KECAMATAN
3604010	CINANGKA
3604020	PADARINCANG
3604030	CIOMAS
3604040	PABUARAN
3604041	GUNUNG SARI
3604050	BAROS
3604060	PETIR
3604061	TUNJUNG TEJA
3604080	CIKEUSAL
3604090	PAMARAYAN
3604091	BANDUNG
3604100	JAWILAN
3604110	KOPO
3604120	CIKANDE
3604121	KIBIN
3604130	KRAGILAN
3604180	WARINGINKURUN
3604190	MANCAK
3604200	ANYAR
3604210	BOJONEGARA
3604211	PULO AMPEL
3604220	KRAMATWATU
3604240	CIRUAS
3604250	PONTANG
3604260	CARENANG
3604261	BINUANG
3604270	TIRTAYASA
3604271	TANARA

Village

BS ID
3604010001001B
3604010001002B
3604010001003B
3604010001004B
3604010001005B
3604010001006B
3604010001007P
3604010001008B
3604010001009B
3604010001010B
3604010001011B
3604010001012B
3604010001013P
3604010001014B
3604010001015B

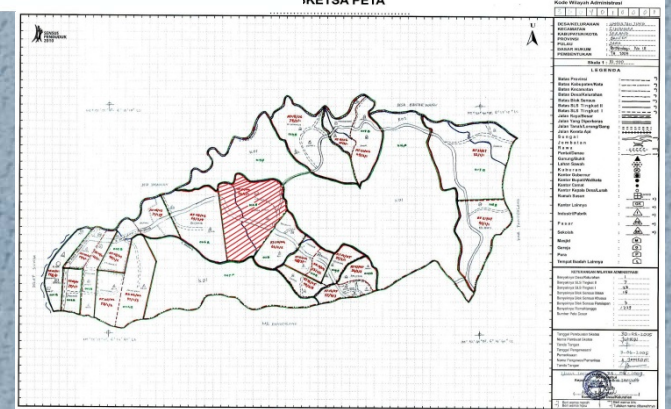
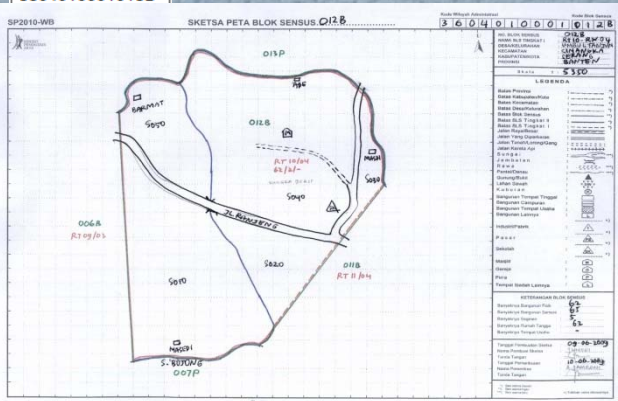


District

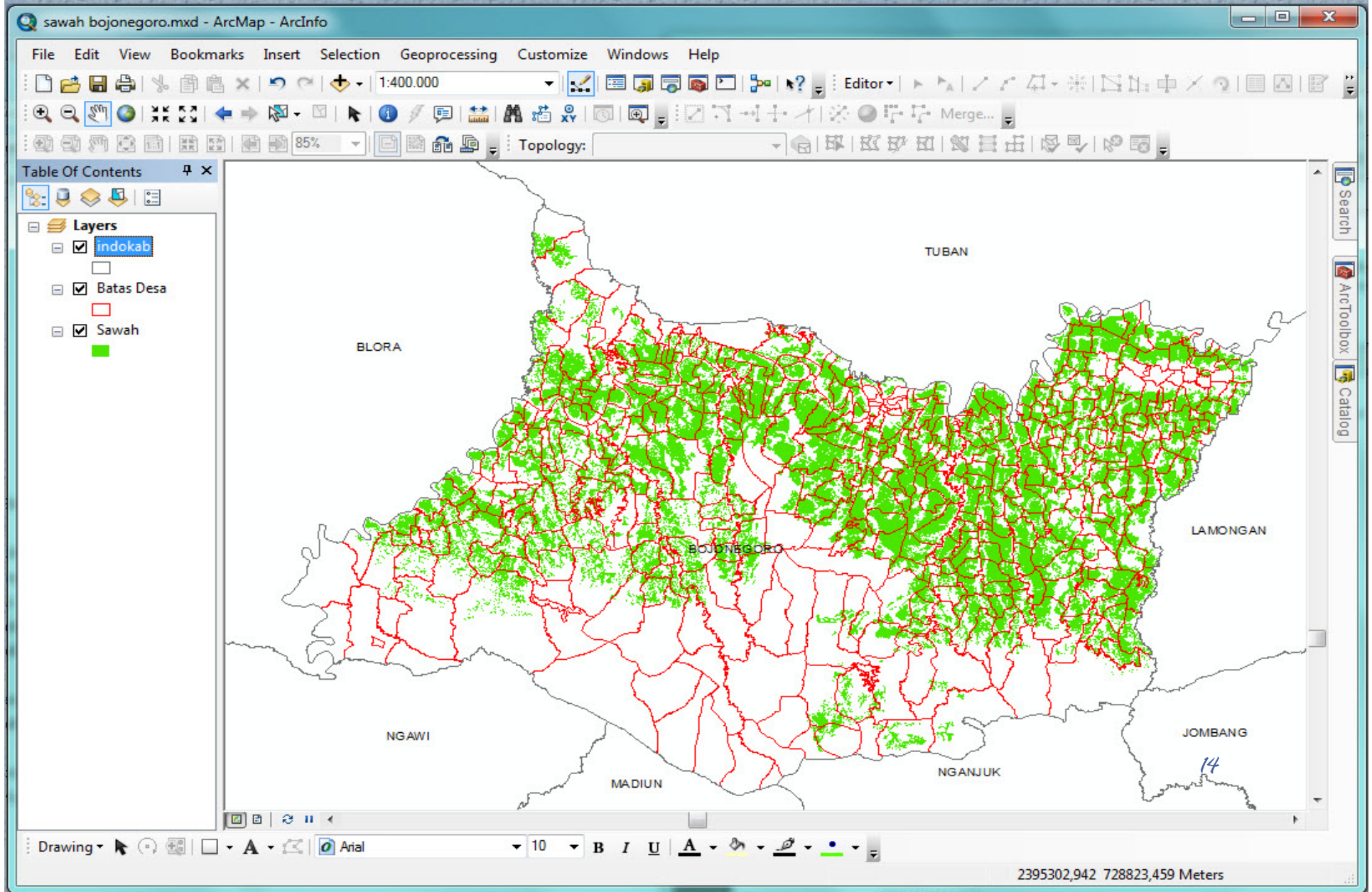


KODE2010	DESA
3604010001	UMBUL TANJUN
3604010002	PASAURAN
3604010003	BANTARWANGI
3604010004	BANTARWARU
3604010005	BULAKAN
3604010006	KARANG SURAG
3604010007	CINANGKA
3604010008	KUBANG BAROS
3604010009	RANCASANGGA
3604010010	CIKOLELET
3604010011	MEKARSARI
3604010012	SINDANGLAYA
3604010013	KAMASAN

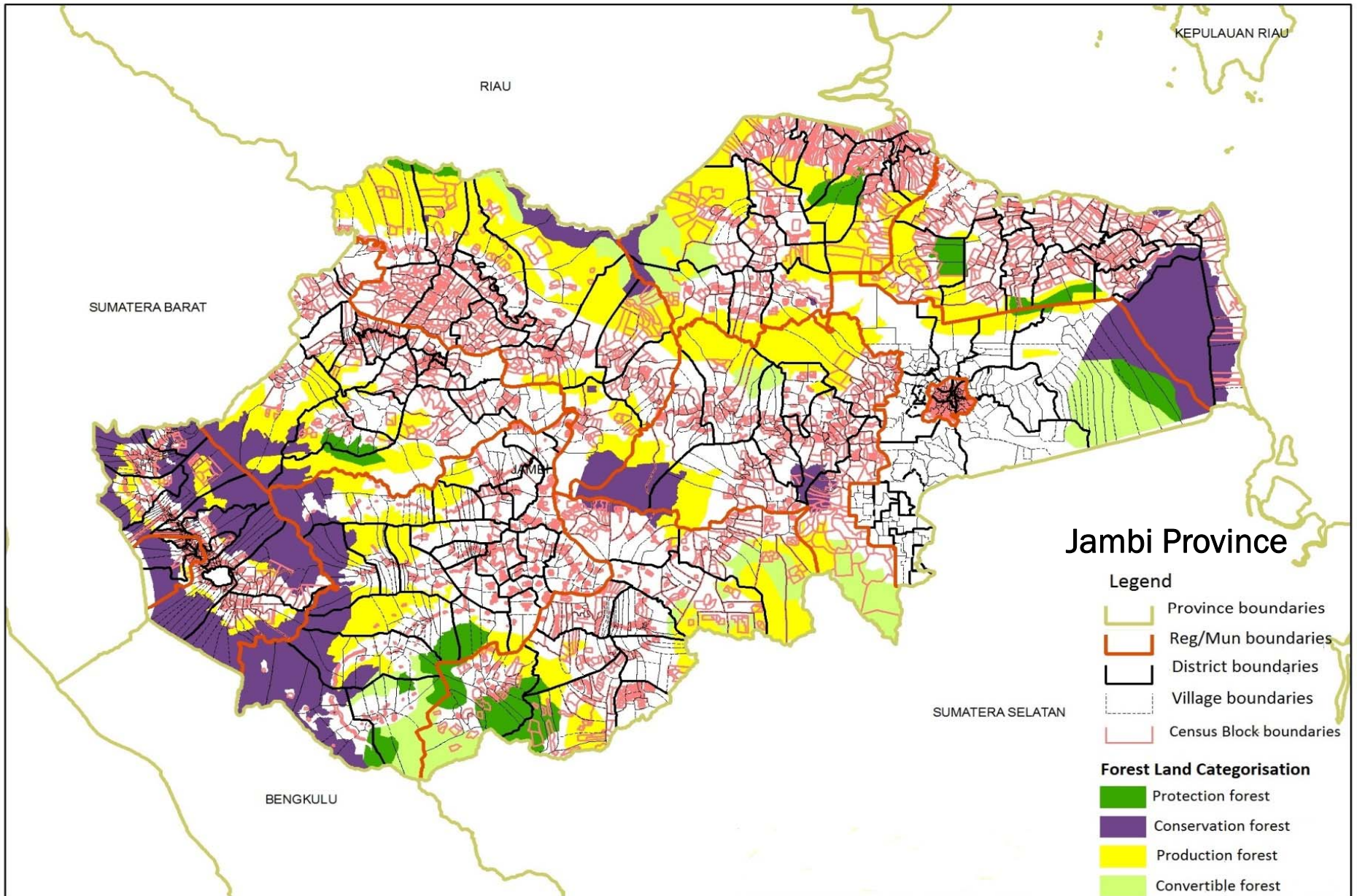
KETSA PETA



Rice Field Area

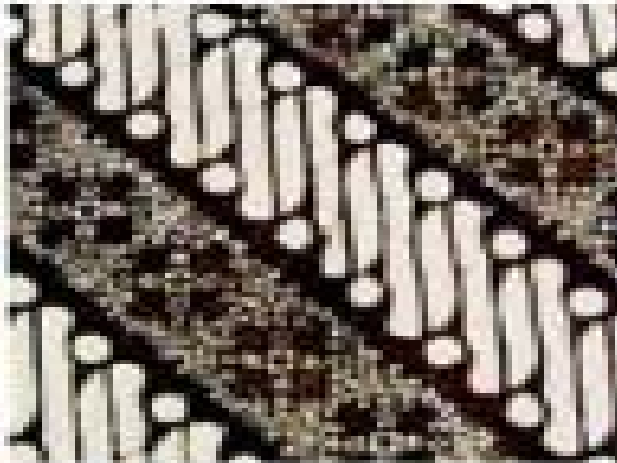


Forest Land Categorisation and Census Block



Lesson Learned

- o Administrative areas is aplicable in collection, compilation, and dissemination of statistics
- o Grid based need to be updated because a census blocks of 2000 and 2010 are totally different.



Thank You

